



Bridgeview Fluid Solutions Inc.

# **EMERGENCY RESPONSE PLAN**

*Last Updated 20230907*

IN THE EVENT OF AN OUT-OF-CONTROL FIRE,  
ANYONE CAN CONTACT THE SASK MINISTRY OF  
ENVIRONMENT ENVIRONMENTAL EMERGENCY  
HOTLINE IMMEDIATELY:

**1-800-667-7525**



## Emergency Response Numbers

In case of a fire, spill, damaged containers or other medical emergencies, report immediately to the emergency number of the product manufacturer. If a company cannot be reached call:

**CANUTEC – 888-226-8832**

<b>ADAMA Agricultural Solutions Canada Ltd.</b> 877-250-9291 or 855-264-6262	<b>NovaSource</b> CHEMTREC (800-424-9300)
<b>Albaugh Canada Inc.</b> CHEMTREC (800-424-9300)	<b>Nufarm Agriculture Inc.</b> CHEMTREC (800-424-9300)
<b>AMVAC Chemical Corporation</b> 800-454-2673 or CHEMTREC (800-424-9300)	<b>Petro-Canada Lubricants</b> 403-296-3000
<b>BASF Canada</b> 800-454-2673 or CANUTEC (888-226-8832)	<b>Plant Products Inc.</b> CANUTEC (888-226-8832)
<b>Bayer Inc.</b> 800-334-7577	<b>Premier Tech Home and Garden</b> 800-268-2806
<b>Belchim Crop Protection Canada</b> 866-336-2983 or CHEMTREC (800-424-9300)	<b>Scotts Canada</b> 800-668-5669
<b>Corteva Agriscience Canada</b> CANUTEC (888-226-8832)	<b>Syngenta Canada Inc.</b> 800-327-8633
<b>FMC Canada</b> 800-331-3148 or CHEMTREC (800-424-9300)	<b>United Agri Products Ltd.</b> 800-561-8273 or CANUTEC (888-226-8832)
<b>Gowan Canada</b> CHEMTREC (800-424-9300)	<b>UPL AgroSolutions Canada</b> 866-303-6952 or CHEMTREC (800-424-9300)
<b>Interprovincial Co-operative Ltd.</b> CANUTEC (888-226-8832)	<b>Winfield United Canada Inc.</b> 306-222-6978
<b>Loveland Products Canada Inc.</b> 800-561-8273 or CANUTEC (888-226-8832)	<b>Univar Canada Ltd.</b> 866-333-6376
<b>N.M. Bartlett Inc.</b> CANUTEC (888-226-8832)	<b>Valent Canada Inc.</b> 800-682-5368 or CHEMTREC (800-424-9300)

**Note:** If the safety or environmental incident is serious please contact AWSA.

**Business hours:** 877-236-2972. **After hours:** 416-471-8100.

*Disclaimer: the information provided is general in nature and was verified for accuracy on the date indicated to serve as a guide. AWSA certified facilities are encouraged to keep all records and emergency contact information current.*

**Updated: September 26, 2019**

# Bridgeview Fluid Solutions Inc.

## *Emergency Response Plan Contact Information*

**Reminder: DIAL 9 for EXTERNAL CALLS. Local calls need 306 prefix.**

**Ambulance/Fire/Police: CALL 911**

**Saskatchewan Spill Report Centre: 1 800 667 7525**

Esterhazy Hospital: 306 745 3973

Esterhazy Medical Clinic: 306 745 3973

Poison Control Center (Poisonings): 1 800 667 4545

Sask First Call (Line Locations): 1 866 828 4888

SaskEnergy (Natural Gas Emergencies): 1 888 700 0427

SaskPower (Electrical Emergencies): 1 306 310 2220

SaskTel (Phone Outages): 611

Saskatchewan Ministry of the Environment (Spill Reporting): 1 306 787 6193

CANUTEC (Canadian Transport Emergency Centre) 24-hour Service: 1 888 226 8832

GFL Esterhazy (Stockholm) (Vac Truck Service) - 306 244 9500

**Cassidy Hruska, President (Gerald SK, ~1 mile to location): 306 745 7663**

**Steve Psutka, CEO (Carlton Trail Regional Park SK, ~5 miles to location): 1 587 879 1300**

**Elliot Negraeff, Plant Operator (Langenburg SK, ~ 20 miles to location) : 1 306 563 8158**

Bridgeview Fluid Solutions Inc. Office (8 AM–5 PM): 306 745 4700

Bridgeview Manufacturing Inc. Office (8 AM–5 PM): 306 745 2711

### **Emergency Neighbor Contact List:**

Bridgeview Manufacturing Inc.: 306 745 2711

Kevin Hruska: 304 745 7555

Cassidy Hruska: 306 745 7663

Annie Hruska: 306 745 2540

Giles Norek: 306 740 8707

K2 Mine: 306 745 5700

Clayton Lomenda: 306 740 8704

# Directions to BFSI Site for First Responders:

## **Directions from Esterhazy:**

Travel East on Highway 22 through Esterhazy  
Turn South (right) at Esterhazy Ford, this will still be Highway 22  
Travel 17 km (about 10 miles) East on Highway 22  
Pass the K3 mine on your right (South side of highway)  
Pass the K2 mine on your left (North side of highway)  
The entrance to the yard is at the grain terminal to the North  
Drive into the yard and go North around the east side of the large bin  
Our building is the first building North of the grain bins  
There is a big red sign that says "Office" above the Office door  
The emergency response info centre is at the "Thin Ice" signpost

## **Directions from Highway 1:**

Travel 61 km North on Highway 8 from Moosomin  
Turn West (left) on Highway 22 and travel 9 km  
The entrance to the yard is at the grain terminal to the North  
Drive into the yard and go North around the east side of the large bin  
Our building is the first building North of the grain bins  
There is a big red sign that says "Office" above the Office door  
The emergency response info centre is at the "Thin Ice" signpost

## **Directions from Highway 16:**

Turn South onto Highway 8 at Langenburg  
Travel 21 km South on Highway 22  
Turn West (right) on Highway 22 and travel 9 km  
The entrance to the yard is at the grain terminal to the North  
Drive into the yard and go North around the east side of the large bin  
Our building is the first building North of the grain bins  
There is a big red sign that says "Office" above the Office door  
The emergency response info centre is at the "Thin Ice" signpost

# Bridgeview Fluid Solutions Inc. (BFSI) location: SW 26-19-32 W1 (Southwest Twenty-Six Nineteen Thirty-Two West of the First)

50°39'13.1"N 101°49'28.8"W

(50 degrees 39 minutes 13 seconds North, 101 degrees 49 minutes 29 seconds West)

50.653638, -101.824661

(Five zero point six five three six three eight, minus one zero one point eight two four six six one)



Emergency Response  
and Primary Muster  
Point location is the  
Grain Terminal Office.

Secondary Muster Point  
location is at site entrance.  
Escape to this location if  
smoke is blowing east-  
ward.

# Introduction

This emergency response plan is primarily concerned with the response required in the worst-case emergency scenario at the BFSI facility: an out-of-control fire in the pesticide storage warehouse. This emergency scenario poses great danger to the health and safety of employees and neighbors. It also has the potential to cause catastrophic environmental damage if the situation is mishandled.

This emergency response plan details what the emergency response actions should be taken—and by who—in the event of an out-of-control fire.

## Policy Statement

This primary concern of BFSI management in the scenario of an out-of-control fire in the pesticide storage warehouse is the protection of human life and health. Of secondary importance is the protection of the environment from pesticide runoff, contaminated firefighting water, and the products of pesticide partial combustion.

The Grain Terminal—and the buildings and equipment North of it—should be defended from damage in the event of an out-of-control fire in the BFSI facility.

No attempt should be made to extinguish an out-of-control fire in the BFSI facility. If the fire is deemed to be uncontrollable, it should be encouraged to burn as intensely as possible to fully combust any pesticides stored in the warehouse.

No attempt should be made to protect the fertilizer shed in the event of an out-of-control fire, unless the fire department determines it is safe to do so. An out-of-control fire would likely pose extreme risk to people between the BFSI facility and the fertilizer shed.

*Signed,*

*Cassidy Hruska*

*Steven Psutka*

*Elliot Negraeff*

# Table of Contents

Emergency Contact Information: Pages 2 - 3

Directions to BFSI Site: Pages 4 - 5

Introduction, Policy Statement, and Table of Contents: Pages 6 - 7

BFSI Incident Command Structure: Page 8

Command Position Descriptions: Pages 9 - 17

Site Drawings: Pages 18 - 23

Spill Containment Plan for an Out-of-Control Fire: Pages 24 - 25

Emergency Response Plan Distribution List: Page 26

Emergency Equipment: Page 27

Risk Assessment: Page 28 - 31

Firefighting Procedures for an Out-of-Control Fire: Page 32

Handling, Storing, and Disposing Hazardous Wastes: Page 33

Appendix 1 - Warehouse Inventory

# BFSI Incident Command Structure

## **BFSI Emergency Control Chief**

First - Steve Psutka - 587 879 1300

Second - Elliot Negraeff - 306 563 8158

*Declares a State of Emergency and acts as the primary decision-maker and supervisor .*

## **BFSI Maintenance Chief(s)**

First - Elliot Negraeff - 306 563 8158

Second - Steve Psutka - 587 879 1300

*Responsible for shutting off power and natural gas in the case of an emergency.*

## **BFSI Site Security Chief(s)**

First - Cassidy Hruska - 306 745 7663

Second - Steve Psutka - 587 879 1300

*Responsible for unlocking all doors/gates. Also watches for looters after an emergency.*

## **BFSI Environmental Chief(s)**

First - Elliot Negraeff - 306 563 8158

First - Steve Psutka - 587 879 1300

*Responsible for making sure culverts are sand-bagged to prevent contaminated water runoff.*

## **BFSI Technical Support Chief**

Elliot Negraeff - 306 563 8158

*Responsible for having information available on products: SDS binder and inventory quantities.*

*These materials are prepared in advance.*

## **BFSI Communications Chief**

Cassidy Hruska - 306 745 7663

*Responsible for alerting neighbors to danger caused by an emergency, for talking to the media about the emergency, and for asking the Grain Terminal Manager to redirect trucks.*

## **BFSI Transportation Chief(s)**

First - Steve Psutka - 587 879 1300

Second - Elliot Negraeff - 306 563 8158

*Responsible for looking after movement of products from the warehouse after an emergency.*

## **BFSI First Aid Chief(s)**

Elliot Negraeff - 306 563 8158

Steve Psutka - 587 879 1300

*Responsible for treating injuries and for taking a roll call at the muster point.*

## **BFSI Fire Chief**

Elliot Negraeff - 306 563 8158

Steve Psutka - 587 879 1300

*Responsible for fighting fires when it is safe to do so and quick extinguishment is possible.*



## BFSI Emergency Control Chief

The role of the **BFSI Emergency Control Chief** is mainly to supervise and instruct the other **BFSI Emergency Chiefs** during the Emergency and coordinate with **Emergency Responders**. The duties of this position are:

- Directing all employees to proceed—and to proceed himself—to the appropriate **Muster Point for roll call** when necessary.
- Formally declaring a state of Emergency, and formally declaring the end of a state of Emergency.
- Acting as the primary decision-maker during the Emergency. **The BFSI Emergency Control Chief will inform firefighters of his decision to let the warehouse burn down in the case of an out-of-control fire.**
- Supervising and coordinating the other **BFSI Emergency Chiefs** during the Emergency, ensuring that their Emergency duties are being performed, and taking on the roles of **BFSI Emergency Chiefs** unable to perform their duties. The **BFSI Emergency Control Chief** also relieves employees and the other **Chiefs** of duty and instructs them to evacuate.
- Acting as the primary contact person for **Emergency Responders** during the Emergency.
- Making decisions about unforeseen complications arising during the Emergency.
- Assisting the other **BFSI Emergency Chiefs** with their duties when necessary.
- Determine the need for—and procure—third-party assistance with security, cleanup, and other needs.
- Remain on site until it is unsafe to do so or the emergency is resolved.
- Investigate and assist in investigation of the Emergency.
- Annually—or more frequently if necessary—reviewing and revising the Emergency Response Plan, coordinating regular and irregular **BFSI Emergency Chief** Training, and discussing the Emergency Response Plan with the **Esterhazy Fire Department** and other agencies.

Signed,

## **BFSI Maintenance Chief**

The role of the **BFSI Maintenance Chief** is to shut off the power and natural gas supply to the building during an Emergency when this is necessary, to proceed to the **Muster Point for roll call**, then to evacuate from the site via the **South Gate** afterwards if this is their only role unless instructed otherwise by the **BFSI Emergency Control Chief**.

The **BFSI Maintenance Chief** must possess enough proven physical strength to actuate the power shutoff switch and the natural gas shutoff valve, both located at the Southeast corner of the loadout bay.

Signed,

## **BFSI Environmental Chief**

The role of the **BFSI Environmental Chief** is to proceed to the **Muster Point for roll call**, to with gravel the two culverts through which pesticides and firefighting water could escape to open water in the event of an out-of-control fire or similar disaster if necessary, then to evacuate from site via the **South Gate** if this is their only role unless instructed otherwise by the **BFSI Emergency Control Chief**.

The **BFSI Environmental Chief** must be able to operate the wheel loader and attach the bucket if necessary to cover culverts with gravel within fifteen minutes of an Emergency being declared.

Signed,

## BFSI Communications Chief

The role of the **BFSI Communications Chief** is to proceed to the **Muster Point for roll call**, then to contact **Neighbors** on the **Emergency Neighbor Contact List** if they are endangered by the Emergency (i.e. in the case of an out-of-control fire). They also give a prepared statement to the media about the Emergency.

They do not evacuate from site after the roll call (unless it is unsafe to stay or they are instructed otherwise by the **BFSI Emergency Control Chief**), but instead remain to assist the **BFSI Security Chief** and meet the media at the **South Gate**. The duties of this position are:

- Contacting all required outside agencies—CANUTEC, the Saskatchewan Ministry of Environment, and the AWSA among others—when asked to by the **BFSI Emergency Control Chief**.
- Documenting all communications made during the Emergency.
- Delivering prepared statements to the media and exercising their discretion when answering media questions.
- Developing prepared media statements in conjunction with the **BFSI Emergency Control Chief**.
- Quickly preparing media statements—or delivering extemporaneous media statements—in the case of an unforeseen emergency.

Signed,

## BFSI First Aid Chief

The role of the **BFSI First Aid Chief** is to provide first aid assistance to all injured people. They also take a **role call** at the **Muster Point** when the **BFSI Emergency Control Chief** orders it.

Once first responders arrive on-site, the BFSI First Aid Chief may be instructed to evacuate via the **South Gate** by the **BFSI Emergency Control Chief**.

The BFSI First Aid Chief must have first-aid and CPR training. The responsibilities of this position are:

- Providing first-aid care to people injured in both Emergency and non-emergency situations.
- Providing an area in a safe location to conduct first aid procedures.
- Bringing a first aid kit to the **Muster Point**.

Signed,

## BFSI Site Security Chief

The role of the **BFSI Site Security Chief** is to proceed to the **Muster Point for roll call**, then to establish and maintain the security of the site during and after an Emergency to prevent access by unauthorized or unnecessary people if ordered to by the **BFSI Emergency Control Chief**.

They remain on site until it is unsafe to do so or they are relieved of duty or ordered to evacuate by the **BFSI Emergency Control Chief**.

The responsibilities of this role are:

- In conjunction with the **BFSI Emergency Control Chief**, will prevent and allow access to the site via the **South Gate** by unauthorized/unnecessary people (see list) and Emergency Responders, respectively.
- Ensuring clear access and egress to the incident site by **Emergency Responders' Vehicles** by moving equipment, discouraging gawkers, and keeping the highway near the **South Gate** clear of parked vehicles.
- Cooperating with local policing organizations to maintain crowd control.
- When necessary, cooperate with third-party physical security providers to prevent looting.

Signed,

## BFSI Technical Support Chief

The role of the **BFSI Technical Support Chief** is to proceed to the **Muster Point for roll call**, then to provide all technical information requirements for the emergency responders. This information is prepared in advance, but first responders may have additional questions.

The **BFSI Technical Support Chief** remains on-site (unless unsafe) to document and film the Emergency Response effort. They also provide information about chemical cleanup and chemical danger.

The BFSI Technical Support Chief may be instructed to evacuate via the **South Gate** by the **BFSI Emergency Control Chief** once their duties are complete.

The responsibilities of this role are:

- Ensuring that the **Emergency Response Information Package** present at the Primary **Muster Point** is updated continually with new SDS's, monthly with a new Inventory List, and Annually with the new Emergency Response Plan.
- Working with emergency responders to provide proper absorbents and neutralizers for chemical spills.
- Providing advice to the **BFSI Emergency Control Chief** on toxicity of products involved in the incident and possible response measures.
- Informing firefighters of the contents of the **Fertilizer Shed** North of the BFSI building.
- Providing information to the **BFSI Communications Chief** to determine the need for evacuation of farms, communities, etc.

Signed,

## **BFSI Transportation Chief**

The role of the **BFSI Transportation Chief** is to proceed to the **Muster Point for roll call**, then to plan and facilitate the movement of goods into and out of the warehouse if necessary during and after an emergency.

They may be ordered to evacuate by the **BFSI Emergency Control Chief**.

The transportation chief must possess a Class 1A driver's licence and have access to a truck and trailer.

Signed,



## Emergency Responders

The role of all **Emergency Responders**—Firefighters, Paramedics, and Police Officers—will be to mitigate the Emergency.

The responsibilities of these responders are:

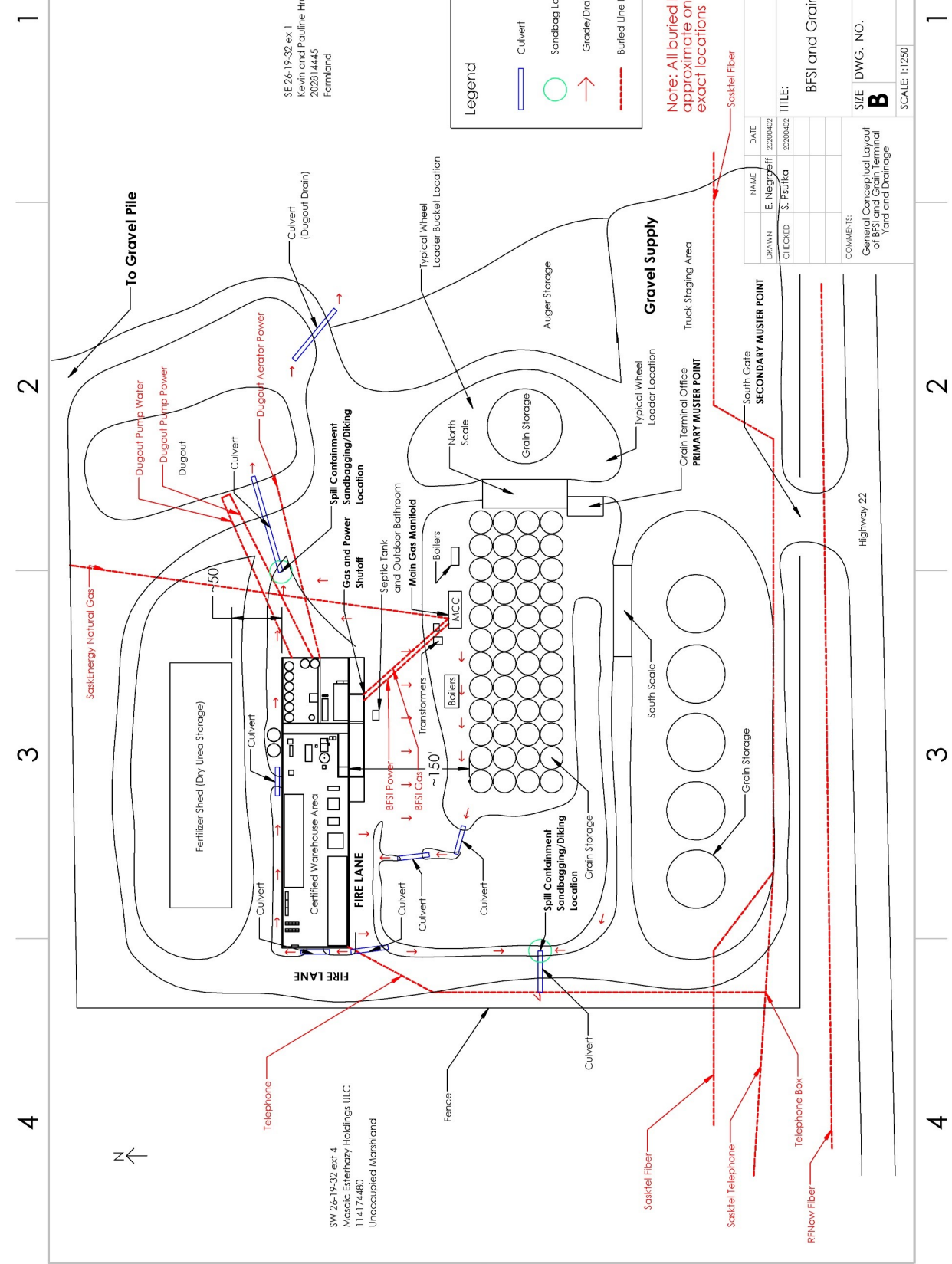
- **Esterhazy Fire Department:** during an Emergency, to find and rescue people trapped or lost in the BFSI building when possible, and to defend the Grain Terminal from an out-of-control fire in the BFSI warehouse. Protecting the **Fertilizer Shed** from an out-of-control fire in the BFSI warehouse may be too dangerous to be practical. Be aware: the first fire department responders may arrive in **Mosaic company vehicles**.
- **Paramedics:** to render aid to injured people in both Emergency and non-emergency situations. In the event of an out-of-control fire, the most likely injury will be poisonous smoke inhalation.
- **Esterhazy RCMP:** during an Emergency, to help establish and maintain site security, to keep the highway near the **South Gate** clear of parked traffic, and to remove by force unauthorized and unnecessary people in collaboration with the **BFSI Emergency Control Chief**. As usual, the **Esterhazy RCMP** will also be the primary responders and investigators in cases of theft, vandalism, looting, trespassing, assault, active shooters, and other crimes.

Signed,

# Site Satellite View - July 2019



# Site Drawing and Approximate Buried Line Locations



SE 26-19-32 ex 1  
Kevin and Pauline Huska  
20281 4445  
Farmland

SW 26-19-32 ext 4  
Mosac Esterhazy Holdings ULC  
11 4174480  
Unoccupied Marshland

DRAWN	CHECKED	NAME	DATE
E. Negrusseff	S. Pautka		20200402

TITLE:  
BFSI and Grain Terminal Yard

COMMENTS:  
General Conceptual Layout  
of BFSI and Grain Terminal  
Yard and Drainage

SIZE DWG. NO.  
**B**

SCALE: 1:1250  
REV SHEET 1 OF 1

1 2 3 4 1 2 3 4

# Sample Line Location Report

For exact locations, call **Sask First Call**: 1 866 828 4888

Header Code: **ROUTINE LOCATE**

Ticket No: 2018312476



**Shermco industries**  
One Line. One Company.

**'ATTENTION CONTRACTOR' PLEASE REMOVE LOCATE FLAGS UPON COMPLETION OF EXCAVATION**

Work Planned for: Tue, 08/07/2018 08:00 AM  
Locate to be completed by: Tue, 08/07/2018 08:00 AM  
Original Call Date: Wed, 08/01/2018 14:37 PM

Contractor: BRIDGEVIEW MFG  
Contact Name: ELLIOT NEGRAEFF  
Alt. Contact: DEAN  
Working for:

Contact Phone: (306)-745-2711 ext.  
Contact Fax:  
Alt Contact Phone: (306)-745-2711 ext.  
Contact Cell (306)-563-8158 ext.

elliottbmi@sasktel.net

City: GERALD  
Address: To:  
Nearest Intersecting Street:

Subdivision: GRAIN TERMINAL

Add. Dig Info: TRENCHING IN U/G POWER BETWEEN THE DUGOUT AND FLUID BUILDING TO RUN THE AERATION. CONCERNED OF GAS LINE/FIBREOPTIC LINE IN WORK AREA. RAYMOND IS 3RD CONTACT AT (306)-745-2711. PLS CALL ELLIOT, DEAN OR RAYMOND AT (306)-745-2711 TO SCHEDULE SITE

CONTACT CALLER TO ARRANGE A SITE MEET,CALL TO CONFIRM WHEN COMPLETED.

Type Of Work: TRENCHING

Locator: MCMANUS, KEVIN (306)-621-5608 ext.

Remarks to excavator: \*\*\*\*\* NOT CLEAR TO DIG OUTSIDE WORK AREA \*\*\*\*\*

Locate Info:

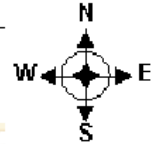
SASKTEL LAS RURAL Status: Marked 3 Crown Completed: 08/03/2018 09:52:26 Notes:SW S26 T19 R32 W1  
SASKENERGY LAS1 RURAL Status: Marked 3 Crown Completed: 08/03/2018 09:52:26 Notes:SW S26 T19 R32 W1  
SASKPOWER LAS RURAL Status: Marked 3 Crown Completed: 08/03/2018 09:52:26 Notes:SW S26 T19 R32 W1

ANY CONCERNS OR QUESTIONS REGARDING THIS LOCATE, PLEASE CONTACT THE LOCATING SERVICES DEPARTMENT AT 306-955-8851 OR BY EMAIL AT: locates@shermco.com

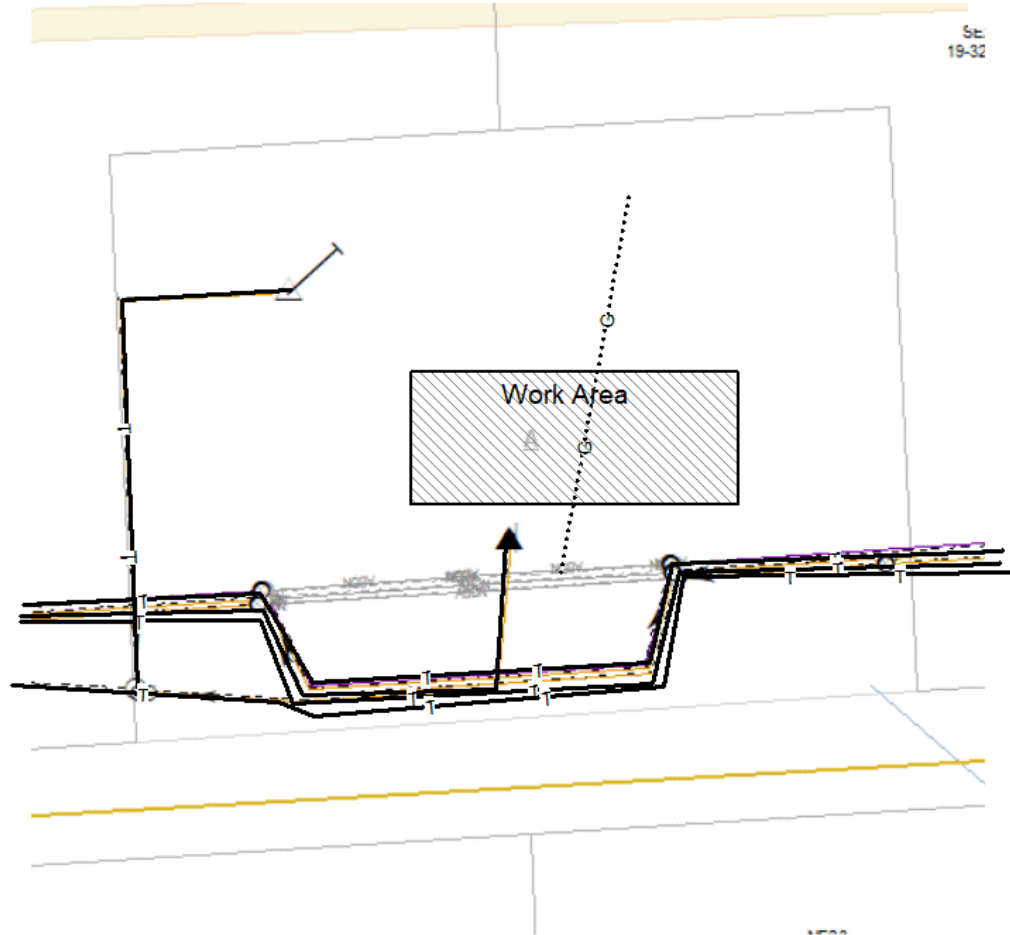
Method of marking lines: Flags  Paint  Stakes

Ticket No: 2018312476

Sketch of proposed excavation/Plant location



St:  
19-32



Sketch is for illustration purpose only. Not to scale. Refer to actual stakes and markings for location (s).

Legend: SaskTel T (solid line) SaskEnergy G (dashed line) SaskPower P (dashed and dotted line)

Always call for re-locate if it appears markings have been disturbed or become unclear, call 1st Call: 1-866-828-4888.

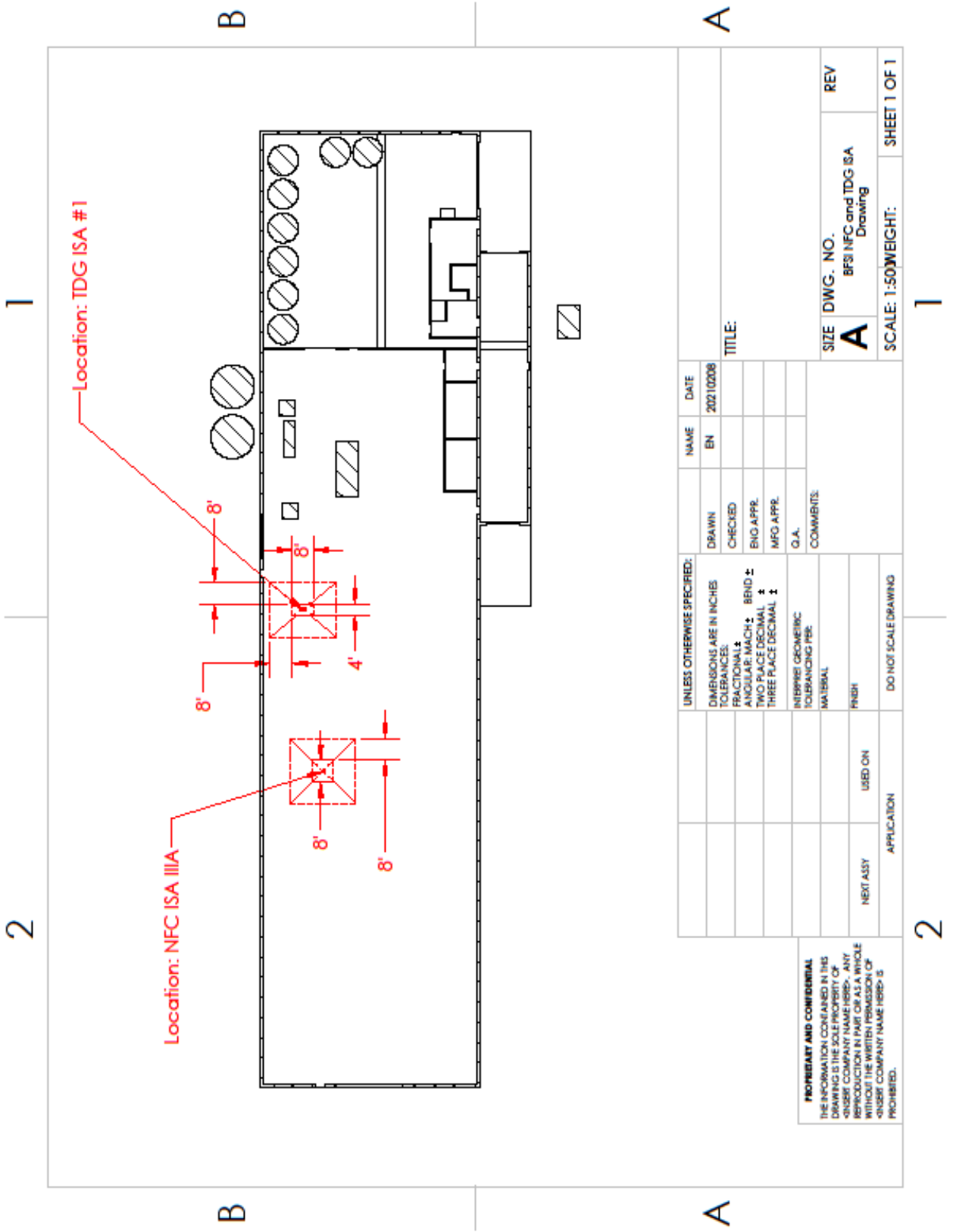
Surface markings color code: SaskTel: Orange SaskEnergy: Yellow SaskPower: Red

Date: 08/03/2018 08:07:27 Customer Contacted: Yes  No  How Contacted: Phone  Door Tag  Record of Locate

This record provides a general understanding between all parties respecting underground facilities in proposed dig zone.  
This receipt acknowledges receipt of the advice herein, and accepts and agrees to the terms and conditions as set out on the reverse.



# NFC and TDG Storage Locations



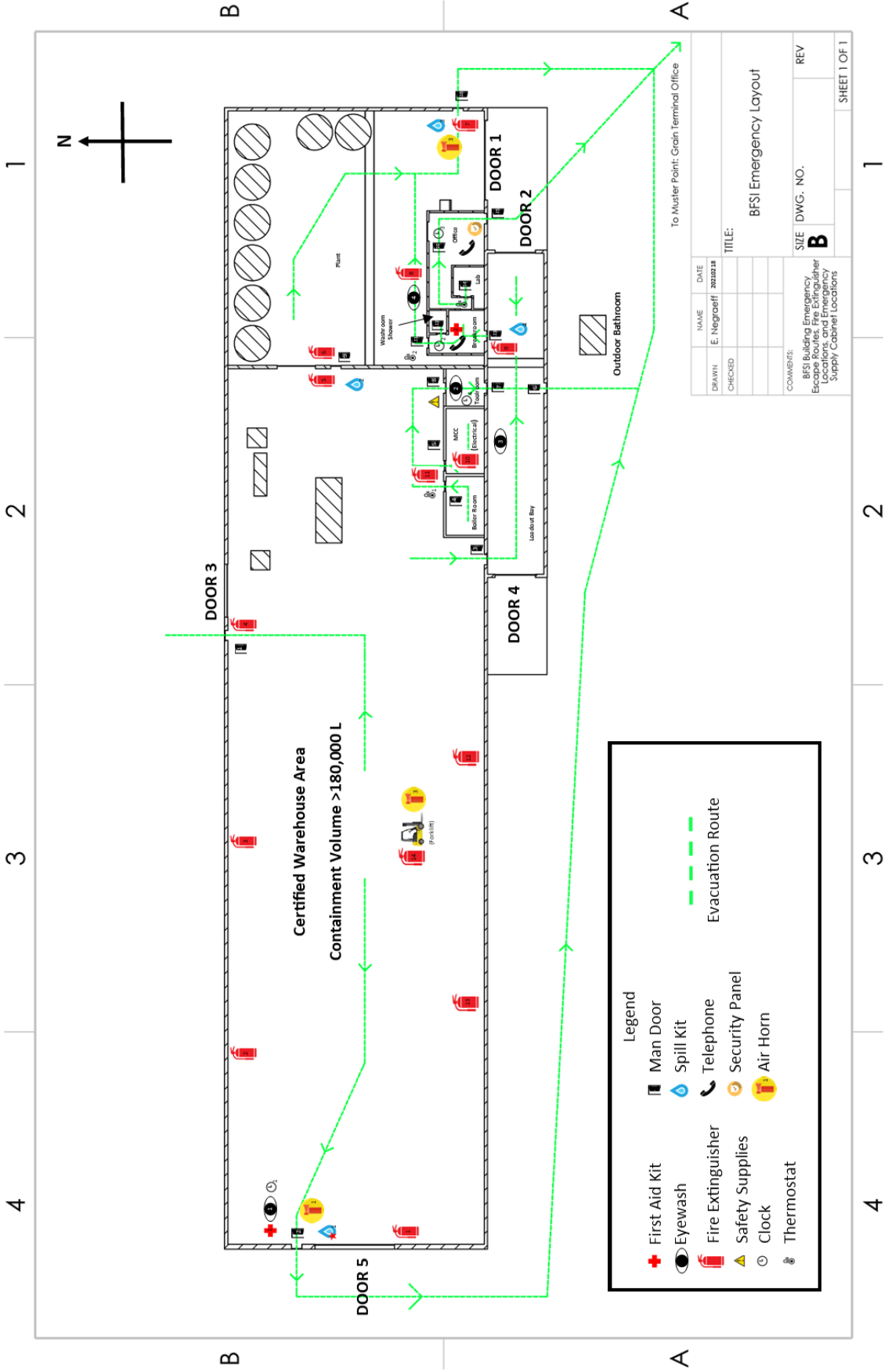
**PROPRIETARY AND CONFIDENTIAL**  
 THE INFORMATION CONTAINED IN THIS DRAWING IS THE SOLE PROPERTY OF BRIDGEVIEW COMPANY NAME HERE. ANY REPRODUCTION IN PART OR AS A WHOLE WITHOUT THE WRITTEN PERMISSION OF BRIDGEVIEW COMPANY NAME HERE IS PROHIBITED.

UNLESS OTHERWISE SPECIFIED:		NAME	DATE
DIMENSIONS ARE IN INCHES	DRAWN	BN	20210208
TOLERANCES:	CHECKED		
FRACTIONAL: ±	ENG APPR.		
ANGULAR: MACH ± BEND ±	MFG APPR.		
TWO PLACE DECIMAL: ±	G.A.		
THREE PLACE DECIMAL: ±	COMMENTS:		
INTERPRET GEOMETRIC TOLERANCING PER:			
MATERIAL:			
FINISH:			
NEXT ASSY	USED ON		
APPLICATION			
DO NOT SCALE DRAWING			

**SIZE DWG. NO.**  
**A** BFS NFC and TDG ISA Drawing  
**REV**

**SCALE: 1:50** WEIGHT: SHEET 1 OF 1

# Emergency Escape Routes and Equipment Locations



DRAWN	NAME	DATE
E. Negroeff		20201218

CHECKED	DATE

TITLE: BFSI Emergency Layout	
COMMENTS:	SIZE DWG. NO.
BFSI Building Emergency Evacuation Routes, Locations, and Emergency Supply Cabinet Locations	B
REV	

SHEET 1 OF 1

# Spill Containment Plan for an Out-of-Control Fire

In the event of an out-of-control fire in the BFSI building where firefighting water must be used, **it is critical that:**

- 1) **Firefighting water contaminated with pesticides is prevented from running off the property**, into the dug-out, or onto the marshy land West of the BFSI warehouse.
- 2) **An out-of-control warehouse fire must be permitted and encouraged to burn as intensely as possible** to fully combust the stored pesticides at high temperatures, thus minimizing the production of highly toxic partial combustion products. Higher fire temperatures will also cause combustion products to be lofted higher into the air to be diluted over a larger area, minimizing damage at ground level.

The 4" tall steel retention curbing installed inside the perimeter of the Certified Warehouse Area can hold only 180,000 litres (47,500 US gallons) of liquid. Aggressive firefighting tactics will quickly fill the curbing and cause pesticide-contaminated water to overflow and escape the burning building. **Using large quantities of firefighting water will enormously increase the environmental damage caused by the fire.**

In the event of an out-of-control fire requiring a call to 911, the following steps **MUST BE COORDINATED BY THE BFSI Emergency Control Chief** AND EXECUTED BY THE BFSI EMERGENCY RESPONSE CHIEFS AS QUICKLY AS POSSIBLE AFTER THE ROLL CALL:

1. The **BFSI Maintenance Chief** must immediately—if it is safe to do so—**shut off the natural gas supply and power supply at the Southeast corner of the Loadout Bay**. The purpose of doing this is to remove gas and energy sources which could worsen an ongoing fire, create new fires, reignite an extinguished fire, or electrocute people who come in contact with firefighting water. No tool is required to actuate the gas valve. If the valve handle breaks or the valve will not turn, inform the **BFSI Emergency Control Chief** immediately so the firefighters know to crimp the line shut. If the **BFSI Maintenance Chief** cannot shut off the natural gas and/or power due to high risk, he must report this to the **BFSI Emergency Control Chief**, who will ask the **firefighters** to do so. If the **BFSI Emergency Control Chief** is unavailable, the **BFSI Maintenance Chief** must make this request.
2. The **BFSI Environmental Chief** must—if it is safe to do so—**immediately cover with gravel the two culverts through which firefighting water or pesticides could escape the property**. Depending on the direction of prevailing winds, smoke may make it unsafe to block the culverts. If this is the case, the **BFSI Environmental Chief** must report this to the **BFSI Emergency Control Chief**, who will ask the **firefighters** to do so. If the **BFSI Emergency Control Chief** is unavailable, the **BFSI Environmental Chief** must make this request.
3. The **BFSI Communications Chief** must immediately begin **contacting the Neighbors on the Emergency Neighbor Contact List to inform them of the danger posed by the fire**. Calls can be placed from the Grain Terminal Office if necessary. Calls should be kept as short as possible (less than one minute). A record of calls must be kept indicating who if anyone answered. He must also contact the **Grain Terminal Manager** and instruct him to put out a radio call redirecting grain trucks to the Hruska Land and Ag yard. The **BFSI Communications Chief** will proceed to the site entrance to deliver a prepared media statement about the fire. While waiting, he should **begin contacting CANUTEC, The Sask Ministry of the Environment, and the AWSA** to inform them of the situation.
4. The **BFSI First Aid Chief** will render aid to injured people on site if it is safe to do so. He is also responsible for **taking a roll call at the Muster Point and reporting any missing people to the BFSI Emergency Control Chief or Emergency Responders, whichever is encountered first**. He must immediately report all injuries to the **BFSI Emergency Control Chief** who will place the call to 911 for an ambulance, regardless of the apparent severity of the injuries. If the **BFSI Emergency Control Chief** is unavailable, the **BFSI First Aid Chief** will place the ambulance call to 911. The injury most likely to be encountered in an out-of-control fire emergency is poisoning by smoke inhalation.



5. The **BFSI Security Chief** must immediately **escort all people requiring evacuation off the site and take up station at the South Gate**. He will prevent unnecessary access to the site, discourage gawkers from blocking the highway, and facilitate the entry of **Emergency Responders**. The following people are likely to require evacuation from the site: BFSI Customers, truckers serving BFSI, truckers serving the Grain Terminal, BFSI & Hruska Land and Ag contractors, and Hruska Land and Ag employees.
6. The **BFSI Technical Support Chief** must immediately **retrieve the Emergency Response Information Package from the Primary Muster Point for presentation to Emergency Responders in the event of an out-of-control fire**. He will accompany the **BFSI Emergency Control Chief** to advise about the technical aspects of the situation. The BFSI Technical Support Chief will serve as the authority on the chemical threat posed by the fire.
7. The **BFSI Transportation Chief** must immediately coordinate with the **Emergency Control Chief** to determine the need for the movement of chemicals away from the warehouse if the chemicals are outside (in a parked truck trailer, for example). He must also coordinate with the Grain Terminal Manager to contact any inbound truck drivers (serving either the Grain Terminal or BFSI) to inform them of the out-of-control fire and redirect them to the Bridgeview Manufacturing Inc. yard or the Hruska Land and Ag yard.
8. The **BFSI Fire Chief** will **attempt to extinguish the fire before it becomes out-of-control**. In the event of an out-of-control fire, he has nothing left to do and must evacuate the site if he has no other role.

After the out-of-control fire has run its course, a serious cleanup effort will need to be undertaken. All of the BFSI spill cleanup equipment will have been destroyed in the fire.

**IN THE EVENT OF AN OUT-OF-CONTROL FIRE, ANYONE  
CAN CONTACT THE SASK MINISTRY OF ENVIRONMENT  
ENVIRONMENTAL EMERGENCY HOTLINE IMMEDIATELY:**

**1-800-667-7525**

# Emergency Response Plan Distribution List

Most recent edition: <http://www.bridgeviewfluids.com/files/ERP.pdf>

- 1) BFSI Office (Printed) (On OHS Desk)
- 2) BFSI Warehouse (Printed) (West End Shipping Desk)
- 3) Cassidy Hruska (Printed) (BFSI Owner & President)
- 4) Steve Psutka (Printed) (BFSI Owner & CEO)
- 5) Elliot Negraeff (Printed) (Plant Operator @ BFSI)
- 6) Roy Perrin (Printed) (Sales @ BFSI)
  
- 7) Colen Mozeski (Printed) (HLAC Grain Terminal, Grain Terminal Office)
- 8) Bridgeview Manufacturing Inc. (Printed) (Neighbor)
  
- 9) Esterhazy Fire Department (via URL in letter)
- 10) AWSA (via URL)

# On-site and Off-site Emergency Equipment

## Personal Protective Equipment:

Personal Air Quality Monitor (O2, CO, LEL, H2S) - On-site, in Office, calibration gas in lab

Thermal camera - On-site, in Office

Radio - On-site, in Office. Default setting is the BMI repeater.

Self-Contained Breathing Apparatus (SCBA) - Esterhazy Fire Department

Spare Compressed Breathing Air Bottles - Esterhazy Fire Department

Rubber or Neoprene Boots - On-site, safety supplies cabinet in warehouse

Lined Turnout Coats and Pants - Esterhazy Fire Department

Face Shield or Similar Protection - On-site, in safety supplies cabinet

Spill Kits - 4 in building

See Emergency Supplies Lists posted around building for sundry supply locations

## Emergency Response Equipment:

Earthmoving Equipment - Wheel loaders, backhoes, dozers available 24/7 from Hruska Land & Ag

Dump Trucks - Pan scrapers and earth hauling equipment available 24/7 from Hruska Land & Ag

Portable Water Pumps - Gas-powered pump available 24/7 in BFSI building and from Hruska Land & Ag

Street Barriers - Concrete blocks available in BFSI yard 24/7

Gravel - Always available in yard

Vacuum Truck - Vacuum truck service and waste disposal by GFL in Esterhazy (Stockholm) - 306 244 9500

# Risk Assessment

Risk assessment prepared by Steve and Elliot, last updated April 13th 2020.

Use the table below to help interpret the risk ratings.

Elliot 20200413

		Consequence				
		Insignificant	Negligible	Moderate	Extensive	Significant
Category	People	Minor skills impact. Minor injury or first aid treatment.	Minor impact to capability. Injury requiring treatment by doctor.	Unavailability of core skills affecting services. Major injury or hospitalization.	Unavailability of critical skills or personnel. Single death or multiple major injuries.	Protracted unavailability of critical skills and people. Multiple deaths.
	Information	Compromise of information otherwise available in the public domain.	Minor compromise of information sensitive to internal or sub-unit interests.	Compromise of information sensitive to this organization's operations.	Compromise of information sensitive to organizational interests.	Compromise of information with significant ongoing impact.
	Property and Equipment	Minor damage or vandalism to asset.	Minor damage or loss of <5% of total assets.	Damage or loss of <20% of total assets.	Extensive damage or loss <50% of total assets.	Destruction or complete loss of >50% of assets.
	Reputation	Local mention only. Quickly forgotten. Freedom to operate unaffected. Self-improvement review required.	Scrutiny by executive, internal committees, or internal audit to prevent escalation. Short term local media concern.	Persistent national concern. Scrutiny required by external agencies. Long term brand impact.	Persistent intense national public, political, and media scrutiny. Long-term brand impact. Major operations severely restricted.	International concern, governmental inquiry or sustained adverse national/international media. Brand significantly affects organization.
	Financial	1% of Project or Annual Budget.	2 - 5% of Project of Annual Budget.	5 - 10% of Project or Annual Budget.	>10% of Project or Annual Budget.	>30% of Project or Annual Budget.
	Capability	Minimal impact on non-core business operations. The impact can be dealt with by routine operations.	Some impact on business areas in terms of delays, systems quality, but able to be dealt with at operational level.	Impact on the organization resulting in reduced performance such that targets are not met.	Breakdown of key activities leading to reduction in performance. Survival is threatened.	Critical failures preventing core activities from being performed. Survival is seriously threatened.
	Environmental	Damage affects < 10 m <sup>2</sup> , self-resolving in < 1 year.	Damage affects < 1 ha., self-resolving in < 1 year.	Long term damage requiring > 1 year to self-resolve.	Damage that will not be remedied without human intervention.	Major catastrophe, permanent ecological damage. Affected area will never recover.

		Consequence						
		Insignificant	Negligible	Moderate	Extensive	Significant		
Likelihood	Qualitative Likelihood	Quantitative Likelihood						
	Quantitative Likelihood	Insignificant	Negligible	Moderate	Extensive	Significant		
Likelihood	Is expected to occur in most circumstances.	Has occurred on an annual basis.	<b>Almost Certain</b>	6	7	8	9	10
	Will probably occur in most circumstances.	Has occurred in the last few years, or occurs often in the industry.	<b>Likely</b>	4	6	7	8	9
	Might occur at some time.	Has occurred at least once or is considered to have a 5% chance of happening in the next year.	<b>Possible</b>	4	5	6	7	8
	Could occur at some time.	Has never occurred but occurs infrequently in the industry, considered to have less than 1% chance of occurring in the next year.	<b>Unlikely</b>	3	4	5	6	7
	May occur only in exceptional circumstances.	Is possible but has never occurred in the industry.	<b>Rare</b>	2	3	4	5	6

Number	What is the hazard?	Who/what could be harmed?	What are the current controls?	Consequence Category	Consequence Ranking	Likelihood Ranking	Risk Ranking	What further actions or controls are needed?	Person Responsible	By When
1	Harmful vapors emitted from products in warehouse	Employee Trucker Customer/contractor	WCB Application in progress. Boiler intakes routed outside. One multi-gas detector installed in boiler room. Insurance policies in progress.	People	Moderate	Unlikely	3	* Install vent fans per AMSA standard. * Implement procedure for cargo inspection on arrival, and periodically while stored. * Ensure WCB coverage is finalized. * Consider installing additional multi-gas detectors. * Secure proper insurance coverages.	Elliot Elliot Cassidy Steve Steve	
2	CO vapors emitted from boilers, forklift or other equipment	Employee Trucker Customer/contractor	Boiler intakes routed outside. Boiler exhausts repaired and sealed. Five CO monitors installed. WCB Application in progress. Insurance policies in progress.	People	Moderate	Unlikely	3	* Install vent fans per AMSA standard. * Develop procedure to open doors and/or run fans when forklift is operating. * Develop procedure to regularly check CO monitors. * Ensure WCB coverage is finalized. * Secure proper insurance coverages.	Elliot Elliot Elliot Cassidy Steve	
3	Equipment and truck movement hazards	Employee		People	Moderate	Unlikely	3	* Develop a procedure for hi-vis PPE. * Ensure there is sufficient lighting in and around building. * Clearly mark traffic lanes and directions inside and outside warehouse. * Develop a procedure to train and qualify equipment operators.	Elliot Elliot Elliot Elliot	
4	Major chemical spill going offsite	Employee or others Property Environment Reputation Financial Business Interruption	Container sizes are small, very few higher volume tanks with hazardous chemicals. Tanks are normally emptied.	People Property & Equipment Reputation Financial Environmental Capability (BI)	Negligible Moderate Negligible Significant Extensive Moderate	Unlikely Unlikely Unlikely Unlikely Unlikely Unlikely	3 3 4 7 6 3	* Ensure all aspects of the ERP are implemented per AMSA. * Install the warehouse berm per AMSA standard. * Ensure proper insurance is in place. * Ensure GFL Esterhazy is familiar with BFSI site, chemicals and spill cleanup requirements.	Elliot Steve Steve Steve Elliot	

5	Onsite contained chemical (pesticide) spill	Employee or others Financial Environment	Employee or others Property & assets Environment Financial Business Interruption	People Financial Environment	Negligible Negligible Negligible	Possible Possible Possible	3 3 3	* Ensure spill kits are available and employees are trained per AMWSA.	Eliot
6	Major fire	Employee or others Property & assets Environment Financial Business Interruption	Fire extinguishers are installed throughout the warehouse, and certified annually. Insurance policies are in progress.	People Property & Equipment Reputation Financial Environmental Capability (BI)	Negligible Moderate Negligible Significant Negligible Moderate	Unlikely Unlikely Unlikely Unlikely Unlikely Unlikely	4 3 4 7 4 3	* Install a monitored smoke/heat/ fire alarm system per AMWSA. * Ensure all aspects of the ERP are implemented per AMWSA. * Ensure proper insurance is in place. * Ensure the construction of fire rated walls per AMWSA.	Steve Eliot Steve Steve
7	Fire caused by battery ignition or electrical fault	Employee or others Property & assets Financial Business Interruption	Fire extinguishers are installed throughout the warehouse, and certified annually. Insurance policies are in progress.	People Property & Equipment Financial Environmental Capability (BI)	Negligible Moderate Extensive Negligible Negligible	Unlikely Unlikely Unlikely Unlikely Unlikely	4 3 6 4 4	* Install a monitored smoke/heat/ fire alarm system per AMWSA. * Ensure all aspects of the ERP are implemented per AMWSA. * Ensure proper insurance is in place. * Ensure the construction of fire rated walls per AMWSA.	Steve Eliot Steve Steve
8	Run away process reaction (future Esterification process, diotin release)	Employee or others Property & assets Environment Reputation Financial Business Interruption	Fire extinguishers are installed throughout the warehouse, and certified annually. Insurance policies are in progress.	People Property & Equipment Reputation Financial Environmental Capability (BI)	Significant Moderate Significant Significant Significant Moderate	Rare Unlikely Rare Rare Rare Rare	6 3 6 6 6 4	* Ensure there are properly engineered processes & equipment. * Ensure there are properly trained operators and procedures. * Ensure HAZOPs are done on hazardous chemical processes.	Steve Eliot Steve
9	Fire or explosion at grain terminal	Employee or others Property & assets Financial Business Interruption	Fire extinguishers are installed throughout the terminal, and certified annually. Insurance policies are in place.	People Property & Equipment Financial Environmental Capability (BI)	Negligible Moderate Extensive Negligible Negligible	Unlikely Unlikely Unlikely Unlikely Unlikely	4 3 6 4 4	* Keep yard free of combustible debris, garbage, etc. which could spread a fire.	Eliot
10	Vehicle fire in or near warehouse	Property & assets Financial	Fire extinguishers	Property & Equipment Financial	Negligible Negligible	Possible Possible	3 3	* Designate and post signs for parking areas and traffic routes. * Ensure fire extinguishers are easily accessible.	Eliot Eliot
11	Acid spill (HCl)	Employee Property damage Financial impact Environmental impact	PPE	People Property & Equipment Financial Environmental	Moderate Negligible Negligible	Possible Possible Possible Possible	6 3 3 3	* Develop a formal procedure for spill cleanup. * Secure proper equipment for spills.	Eliot Eliot

12	Caustic spill	Employee Property damage Financial impact Environmental impact	PPE	People Property & Equipment Financial Environmental	Negligible Negligible Negligible Negligible	Possible Possible Possible Possible	3 3 3 6	* Develop a formal procedure for spill cleanup. * Secure proper equipment for spills.	Elliot Elliot
13	Oxidizer spill	Employee Property damage Financial impact Environmental impact	PPE	People Property & Equipment Financial Environmental	Negligible Negligible Negligible Negligible	Possible Possible Possible Possible	3 3 3 7	* Develop a formal procedure for spill cleanup. * Secure proper equipment for spills.	Elliot Elliot
14	Known poisoning	Employee or other	PPE	People	Moderate	Unlikely	3	* Implement AWSA standards. * Procedure to perform regular air quality checks.	Elliot Elliot
15	Unknown poisoning	Employee or other	PPE	People	Moderate	Unlikely	3	* Implement AWSA standards. * Procedure to perform regular air quality checks.	Elliot Elliot
16	Sudden generation of dangerous gas	Employee or other	PPE	People	Moderate	Unlikely	3	* Implement AWSA standards. * Procedure to perform regular air quality checks.	Elliot Elliot
17	Entrapment	Employee or contractor	Informal procedures	People	Significant	Rare	6	* Develop a formal confined space procedure.	Elliot
18	Tornado strike	Employee or others Property & assets Financial Business Interruption		People Property & Equipment Financial Environmental Capability (BI)	Negligible Significant Significant Negligible Moderate	Unlikely Unlikely Unlikely Unlikely Unlikely	4 7 7 4 3	* Ensure proper insurance coverages are in place.	Steve
19	Severe weather	Property & assets Financial Business Interruption		Property & Equipment Financial Environmental Capability (BI)	Significant Significant Negligible Negligible	Unlikely Unlikely Unlikely Unlikely	7 7 4 4	* Ensure proper insurance coverages are in place.	Steve
20	Flooding	Property & assets Financial Business Interruption	All inventory is on pallets min 4" off the floor.	Property & Equipment Financial Environmental Capability (BI)	Significant Significant Insignificant Negligible	Unlikely Unlikely Unlikely Unlikely	7 7 3 4	* Ensure proper insurance coverages are in place.	Steve
21	Sabotage, Vandalism, Theft	Property & assets Financial	Security cameras with incomplete coverage.	Property & Equipment Financial	Negligible Negligible	Possible Possible	3 3	* Install security system per AWSA, plus install security cameras for better coverage.	Steve

# Firefighting Procedures for an Out-of-Control Fire

## AWSA Recommended Agrichemical Products Fire Control Tactics:

- **Recommended fire control medium for most pesticide fires is FOAM.**
- **Excessive use of firefighting water will enormously increase the spread of pesticides and will cause an environmental catastrophe.**
- When the fire is deemed by the fire department or the BFSI Emergency Control Chief to be out-of-control, the fire department should adopt a defensive strategy and encourage the BFSI facility to **burn as intensely as possible to completely combust all pesticides.**
- **The Grain Terminal**—and equipment and buildings North of the Grain Terminal—should be protected from the fire if possible.
- **The Fertilizer Shed** North of the BFSI facility should not be defended unless the fire department deems it is safe to do so. People caught between the two buildings during an intense fire will likely face extreme risk. The fertilizer shed normally houses only dry urea fertilizer blends, **not nitrate fertilizers.**

## Fire Preparedness:

- The Esterhazy Fire Department will be **invited annually** to inspect the BFSI facility and yard.
- The Esterhazy Fire Department has our permission to **force open any door, cut any lock, break any window, or use any means of entry necessary** in the BFSI facility or yard to gain access in the event of an emergency.
- The **residence nearest the BFSI facility is approximately 900 m away** (see attached map).
- Water can be **taken easily from the dugout** for fighting controllable fires or defending the Grain Terminal. Accessing the dugout in winter will be difficult or impossible.
- The symptoms of **poisoning by pesticide fire smoke inhalation** will be similar to the symptoms of poisoning by regular smoke inhalation, but may be more intense and serious.
- Firefighters are **strongly encouraged to wear their SCBA equipment** even if they are not entering the burning building due to the special risk posed by pesticide fire smoke. Most pesticides are organochlorine and organofluorine compounds with only moderate human toxicity, but the combustion products of these kinds of compounds can be extremely toxic.
- The building can be **forcefully ventilated by running the exhaust fans** in the plant and the warehouse. The switches are the single switch by the East Man Door and the switches near the east warehouse man door. Note: if the BFSI Maintenance Chief has shut off the building power, it will have to be turned back on. All garage doors can be rolled up manually.

## Post-Fire Cleanup:

- Pesticides and pesticide smoke residue adhering to firefighters and their equipment may pose a **lingering threat** to firefighting personnel.
- All firefighting personnel should **shower and shampoo** immediately upon return to the fire hall.
- All firefighting equipment should be **soaped and washed** immediately.



## **Procedure on Handling, Storage and Disposing of Hazardous Waste**

### **You should NOT clean up a spill if:**

*You don't know what the spilled material is  
You lack the necessary protection or equipment to do the job safely  
The spill is too large to contain  
The spilled material is highly toxic  
You feel any symptoms of exposure*

*Instead contact M.O.E. and ask for assistance*

*Call **911** if spill is immediately health-threatening*

### **Clean Up Procedure:**

- Advise the supplier of the situation and ask for assistance if required
- Call M.O.E. if further assistance required
- Wear gloves, eye protection, rubber boots, etc
- Contain and absorb spill using absorbents appropriate for the material (see MSDS)
- Place the hazardous material in the overpack drum available on site
- Decontaminate employee with boots/HAZMAT gear by using decontamination pool / shower
- Place contaminated clothes, rags, equipment, into overpack drum
- Place a highly visible label on the drum, state contents clearly, include the date of the clean up and sign the label so others will know who has done the work.
- Call a licensed waste disposal firm to pick up for disposal
- Maintain a copy of all disposals and where it has been disposed.

\_\_\_\_\_  
Manager's Signature

\_\_\_\_\_  
Date:

*Waste pesticides can be hazardous and should be disposed of in a responsible manner*

Bridgeview Fluid Solutions Inc.  
(BFSI)

# **EMERGENCY RESPONSE PLAN**

*Last Updated 20230907*

IN THE EVENT OF AN OUT-OF-CONTROL FIRE,  
ANYONE CAN CONTACT THE SASK MINISTRY OF  
ENVIRONMENT ENVIRONMENTAL EMERGENCY  
HOTLINE IMMEDIATELY:

**1-800-667-7525**